

Northern Rockies
Oversized Load
Restrictions
2025

Montana Oversized Load Restrictions

Dimensions	Interstate	Interstate *Holiday & **Holiday Weekend	Regular Highway	Regular Highway *Holiday & **Holiday Weekend
Over 18' wide	24/7	NO GO	Not on the weekend	NO GO
Up to 18' wide	24/7	24/7	Day Light hours ONLY	NO GO
Over 12'6" wide, 150'long and/or 15'6" high	24/7	24/7	Day Light hours ONLY	NO GO
10' to 12'6" wide	24/7	24/7	Day Light hours ONLY	Day Light hours ONLY
More than 10' wide, 150'long and/or 15'6" high	24/7	24/7	Day Light hours ONLY	Day Light hours ONLY
Up to 10' wide, 150'long and/or 15'6" high	24/7	24/7	24/7	24/7

-----ALSO SEE RED ROUTE MAP FOR ADDITIONAL RESTRICTIONS-----

***Holidays means:** New Year's Day, Memorial Day, Fourth of July, Labor Day, Thanksgiving Day, and Christmas Day.

****Holiday weekend means:** a period of consecutive calendar days adjacent to a holiday, during which travel is prohibited. Holiday weekend time periods include: (a) a holiday which falls on a Friday or Saturday, prohibiting travel on Friday, Saturday or Sunday; (b) a holiday which falls on a Sunday or Monday, prohibiting travel on Saturday, Sunday or Monday; (c) a holiday which falls on a Tuesday, Wednesday or Thursday, prohibiting travel on that day only; or (d) the thanksgiving holiday, prohibiting travel on Thursday, Friday, Saturday and Sunday. Per ARM 18.8.101

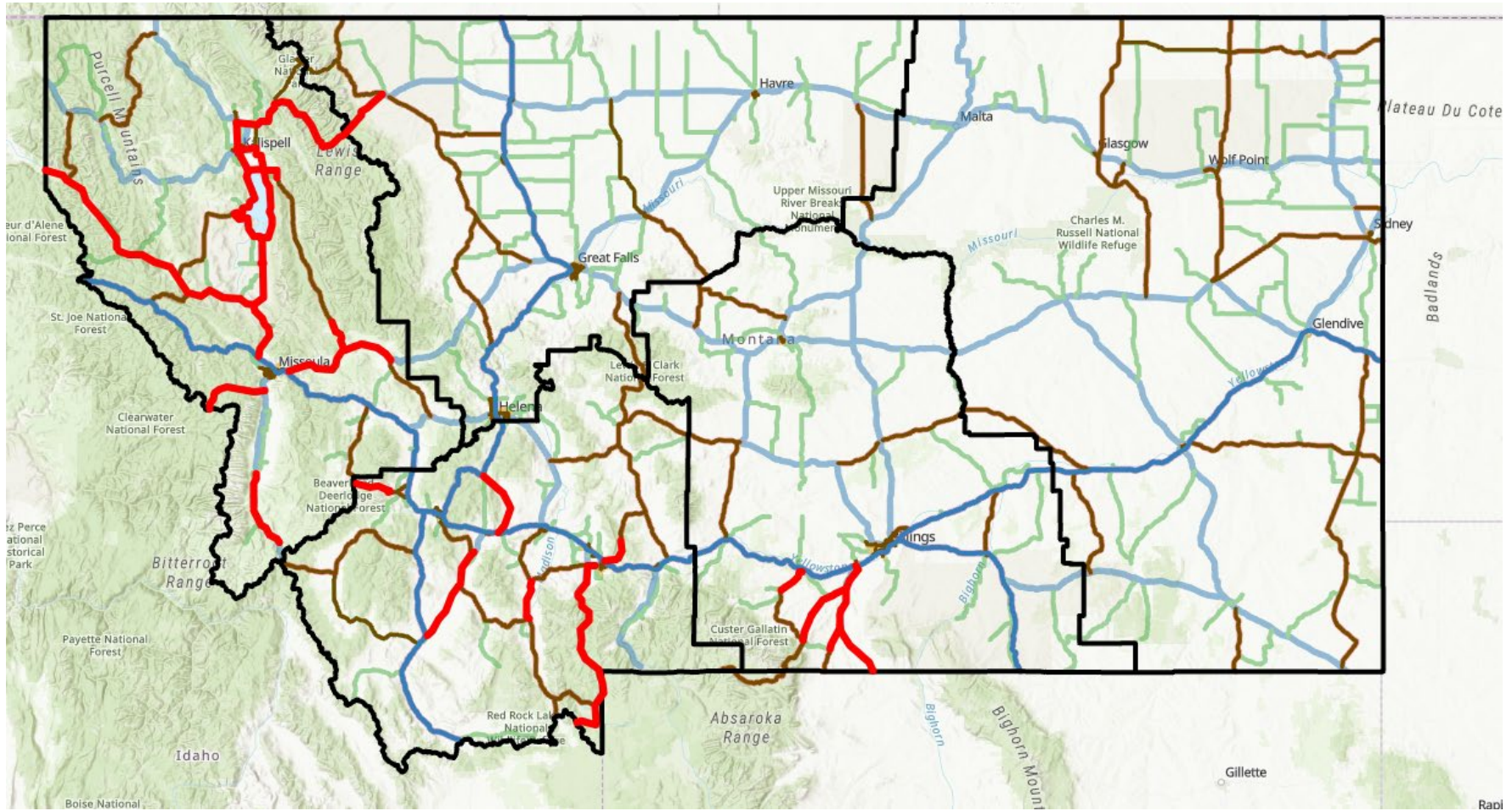
MT Bridge loading & Clearance: <https://www.mdt.mt.gov/business/contracting/bridge/brm.aspx>

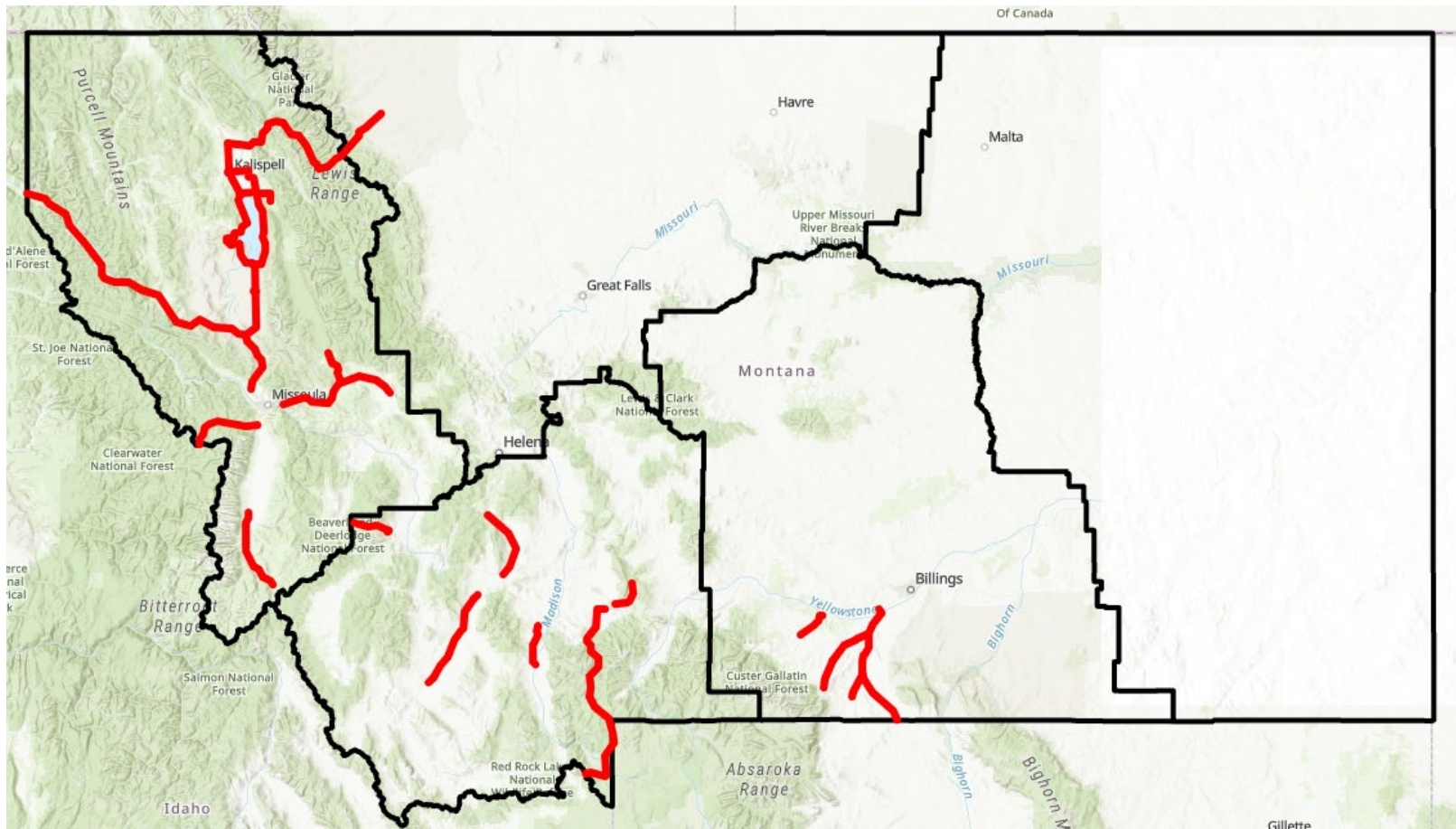
- Create login & password

MT Pre-Trip Routing: <https://mtpermitroute.promiles.com/BidRoute.aspx>

- Enter load dimensions, weight, origin/destination information. Map displays suggested route & road restrictions (NOTE: map displays “Suggested Route Only – Not Valid for Travel”)

Red Route Highways





Vehicle combinations exceeding 10' wide	<ul style="list-style-type: none"> • No travel after 15:00 Friday until sunrise on Saturday • No travel after 12:00 non on Sunday until sunrise Monday
Single units over 55' long	
Combinations over 110' long and over 14' 6" high	
Vehicle combinations exceeding 18' wide, 120' long, or 18' high	<ul style="list-style-type: none"> • No travel after 15:00 Friday until sunrise on Monday

Idaho Oversized Load Restrictions

Route Color	Dimensions	24hr Travel	Fridays after 14:00	Daylight Travel	Weekend Travel	Holiday Travel
*Red	8'7"-12'6" wide and/or Over 75' long	NO GO	NO GO	Yes GO	NO GO	NO GO
**Black	8'7"-18' wide and/or Over 120' long	12' wide or under only	Yes GO	Yes GO	Yes GO	12' wide or under only
White / Interstate	8'7"-18'	12' wide or under only	Yes GO	Yes GO	Yes GO	12' wide or under only

*** Red-Coded Routes.** Daylight travel until 2 p.m. on Friday or the day before a holiday, as identified in Subsection 305.04 of this section, no travel is allowed on Saturday or Sunday. Single-trip permits may allow travel during different time periods. Travel may resume at sunrise on Monday or the day following a holiday. (Subsection 305.04 Holidays. The following days are designated as holidays: New Year's Day; Memorial Day; Independence Day; Labor Day; Thanksgiving; and Christmas.)

**** Black-Coded Routes.** Loads not over twelve (12) feet wide, one hundred twenty (120) feet long, and fifteen (15) feet high may travel twenty-four (24) hours per day, seven (7) days per week. Loads in excess of any of the preceding dimensions are required to follow the Pilot/Escort Vehicle Travel and Vertical Clearance of Structures Map restrictions and are limited to traveling before 4:00 p.m. on the day preceding a holiday. Travel may be resumed at sunrise on the day following the holiday.

***** Heavy Commuter Traffic Restrictions.** The movement of oversize permitted vehicles or loads which are more than thirteen (13) feet in width are prohibited from movement on State Roadways at times of heavy commuter traffic. Unless otherwise defined on the permit, the times of heavy commuter traffic will be 6:00 a.m. to 9:00 a.m., and 4 p.m. to 6:30 p.m. local time, Monday through Friday except as noted under Holiday restrictions. The location of heavy commuter occurs at the identified mile posts or within one (1) mile of the city limits of the following cities: a. Boise valley - I-84, MP 26 to MP 59; b. Coeur d'Alene – I-90, MP 0 to MP 17; c. Eagle; d. Emmett; e. Garden City; f. Idaho Falls – I-15 MP 115 to MP 121; g. Middleton; h. Pocatello valley – I-15 MP 67 to MP 74 and I-15B MP 0 to MP 5.5 and I-86 MP 58 to MP 63 and US-30 MP 331 to MP 336 and US 91 MP 100 to MP 103 and US 91 MP 77 to MP 82; i. Star; and j. Twin Falls - US 93 MP 41 to MP 53.

IDAPA 39 - Idaho Transportation Department:

<https://permits4idaho.com/PDFGate.aspx?LoginNoticeID=19>

Route Capacity Map:

<https://permits4idaho.com/PDFGate.aspx?LoginNoticeID=60>

Pilot/Escort Vehicle Travel Requirements:

<https://permits4idaho.com/PDFGate.aspx?LoginNoticeID=68>

Pilot/Escort Vehicle Travel Requirements and Vertical Clearance of Structures



Your Safety • Your Mobility
Your Economic Opportunity

January 8, 2025

Idaho State Highway System

Route color	Over width only	Number and location of pilot cars	Over length only	Number and location of pilot cars	Over length & width		Number and location of pilot cars	Travel on Fridays after 2pm	Travel on weekends	Daylight travel	24 hr travel	Holiday travel
					L	W						
Red	8'7"-10'	1 Front	Over 75'	1 Front	Over 75'	8'7"-12'6"	1 Front 1 Rear	No	No	Yes	No	No
	10'1"-12'6"	1 Front 1 Rear										
Black	8'7"-12'	N/A	Over 120'	1 Front	Over 120'	8'7"-12'	1 Front 1 Rear	Yes	Yes	Yes	12' wide or under	12' wide or under
	12'1"-14'	1 Front										
	14'1"-18'	1 Front 1 Rear										
White	8'7"-15'	N/A						Yes	Yes	Yes	12' wide or under	12' wide or under
	15'1"-18'	1 Rear										

Vertical Clearance Key

- 14' or less
- 14'1" to 15'0"
- ◆ 15'1" to 15'6"

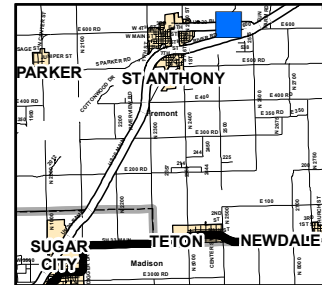
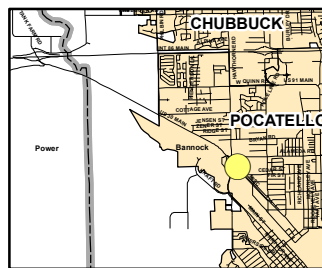
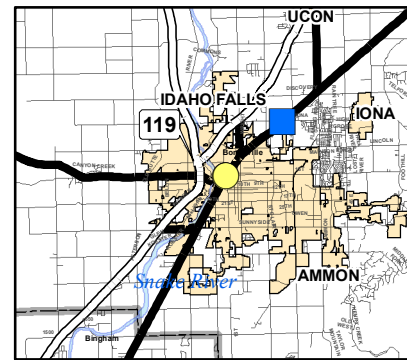
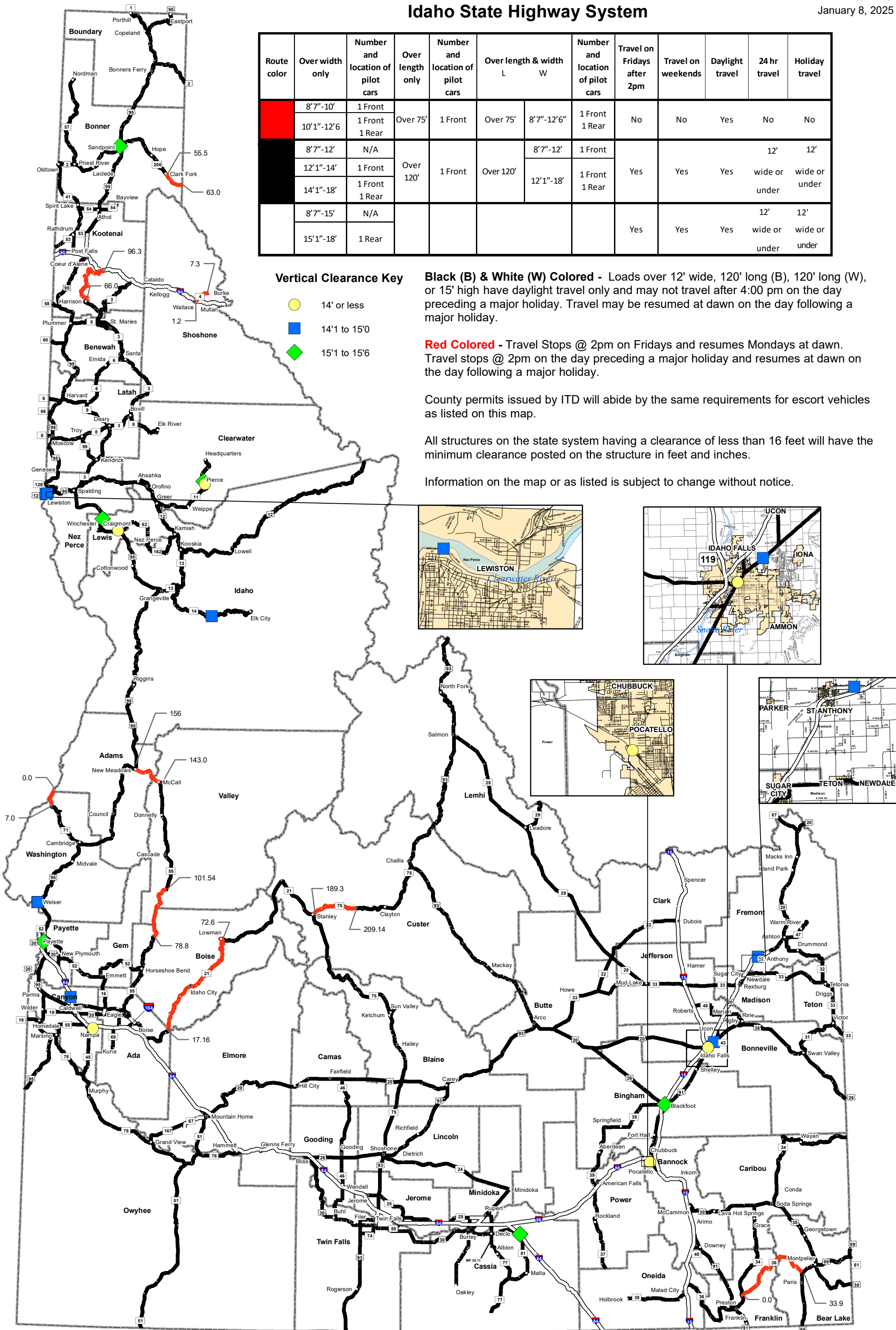
Black (B) & White (W) Colored - Loads over 12' wide, 120' long (B), 120' long (W), or 15' high have daylight travel only and may not travel after 4:00 pm on the day preceding a major holiday. Travel may be resumed at dawn on the day following a major holiday.

Red Colored - Travel Stops @ 2pm on Fridays and resumes Mondays at dawn. Travel stops @ 2pm on the day preceding a major holiday and resumes at dawn on the day following a major holiday.

County permits issued by ITD will abide by the same requirements for escort vehicles as listed on this map.

All structures on the state system having a clearance of less than 16 feet will have the minimum clearance posted on the structure in feet and inches.

Information on the map or as listed is subject to change without notice.





April 8, 2025

ROUTE CAPACITY MAP

BASIC ALLOWABLE UNIT WEIGHT

	33,000 LBS	30,000 LBS	27,000 LBS	25,500 LBS	24,000 LBS	22,500 LBS	POSTED
SINGLE AXLE							
TWO-AXLE TANDEM	56,000 LBS	51,500 LBS	46,000 LBS	43,500 LBS	41,000 LBS	38,000 LBS	BRIDGES
THREE-AXLE TRIDEM	70,500 LBS	64,500 LBS	57,500 LBS	54,500 LBS	51,500 LBS	48,000 LBS	

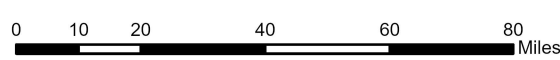
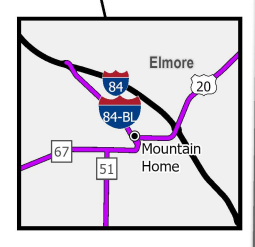
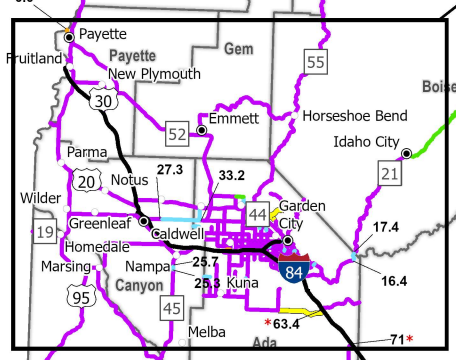
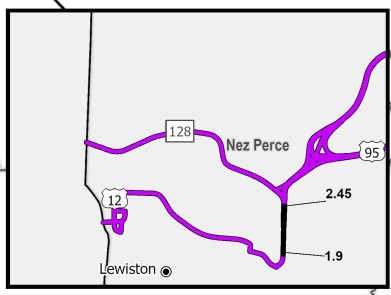
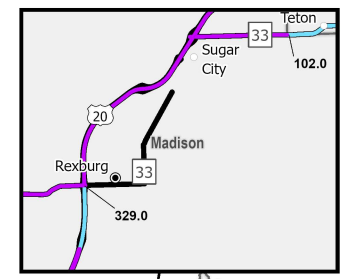
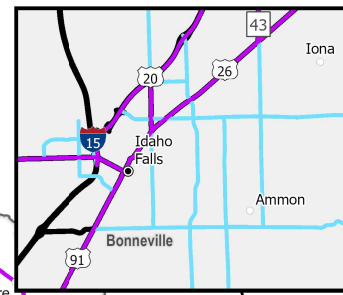
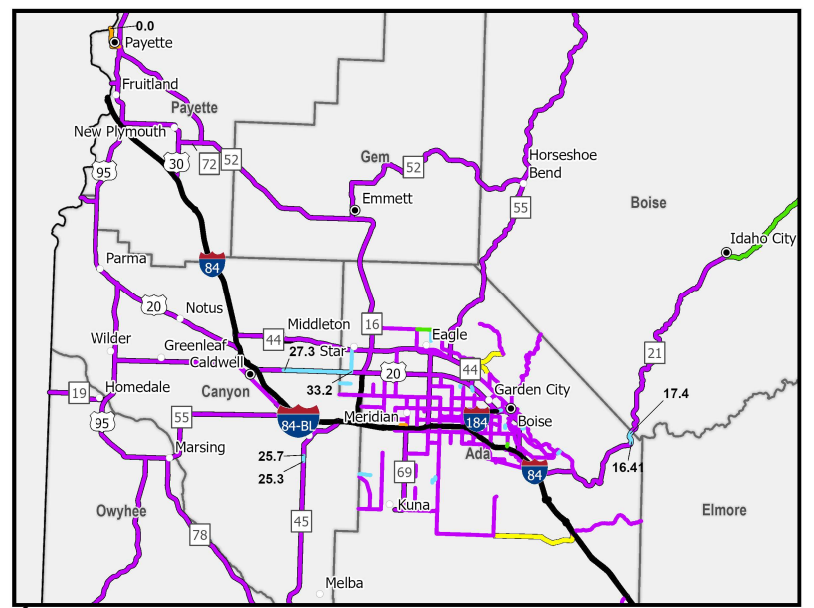
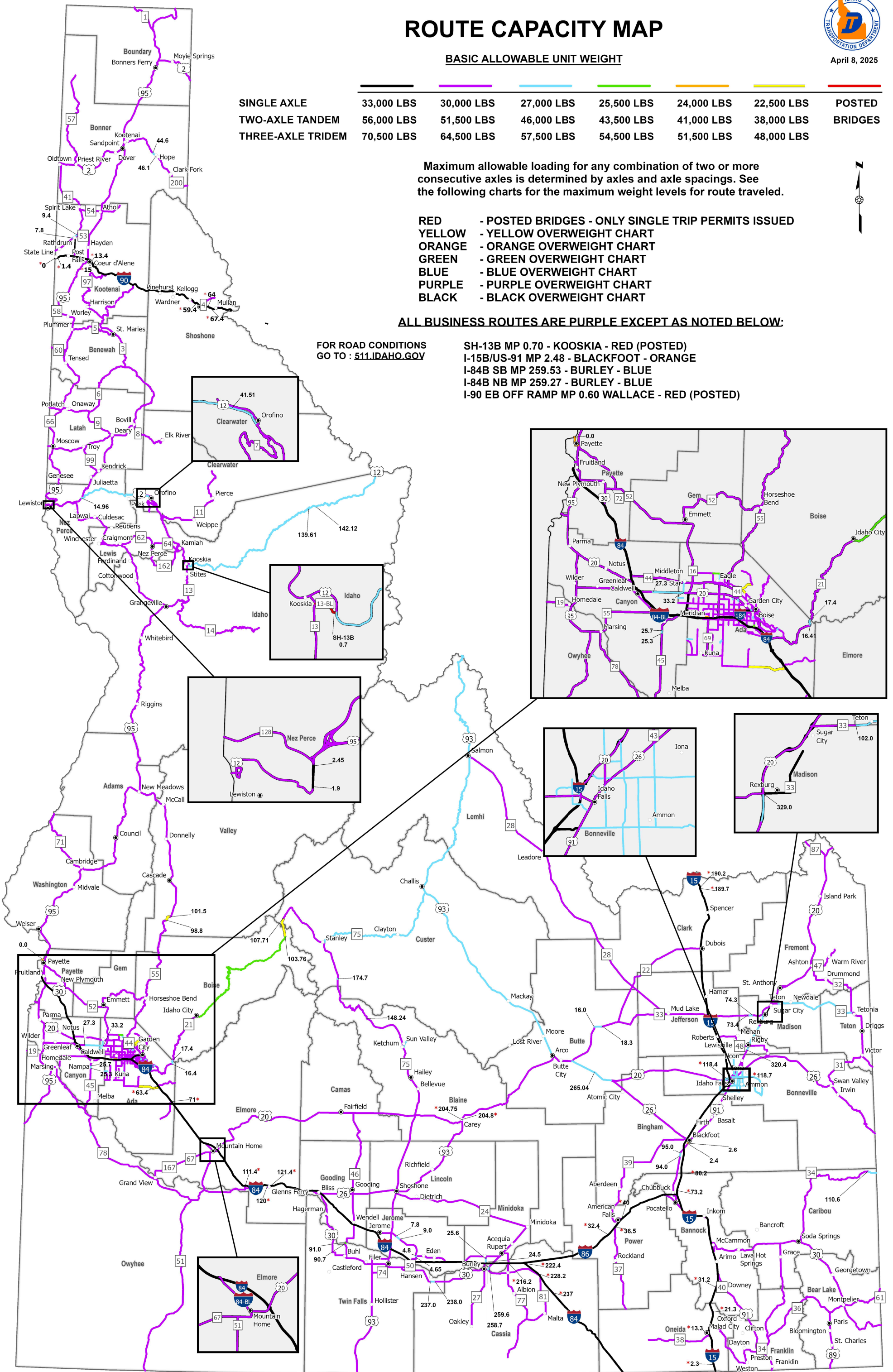
Maximum allowable loading for any combination of two or more consecutive axles is determined by axles and axle spacings. See the following charts for the maximum weight levels for route traveled.

- RED - POSTED BRIDGES - ONLY SINGLE TRIP PERMITS ISSUED
- YELLOW - YELLOW OVERWEIGHT CHART
- ORANGE - ORANGE OVERWEIGHT CHART
- GREEN - GREEN OVERWEIGHT CHART
- BLUE - BLUE OVERWEIGHT CHART
- PURPLE - PURPLE OVERWEIGHT CHART
- BLACK - BLACK OVERWEIGHT CHART

ALL BUSINESS ROUTES ARE PURPLE EXCEPT AS NOTED BELOW:

FOR ROAD CONDITIONS GO TO : 511.IDAHO.GOV

- SH-13B MP 0.70 - KOOSKIA - RED (POSTED)
- I-15B/US-91 MP 2.48 - BLACKFOOT - ORANGE
- I-84B SB MP 259.53 - BURLEY - BLUE
- I-84B NB MP 259.27 - BURLEY - BLUE
- I-90 EB OFF RAMP MP 0.60 WALLACE - RED (POSTED)



* CHANGES SINCE LAST VERSION OF MAP

North Dakota Oversized Load Restrictions

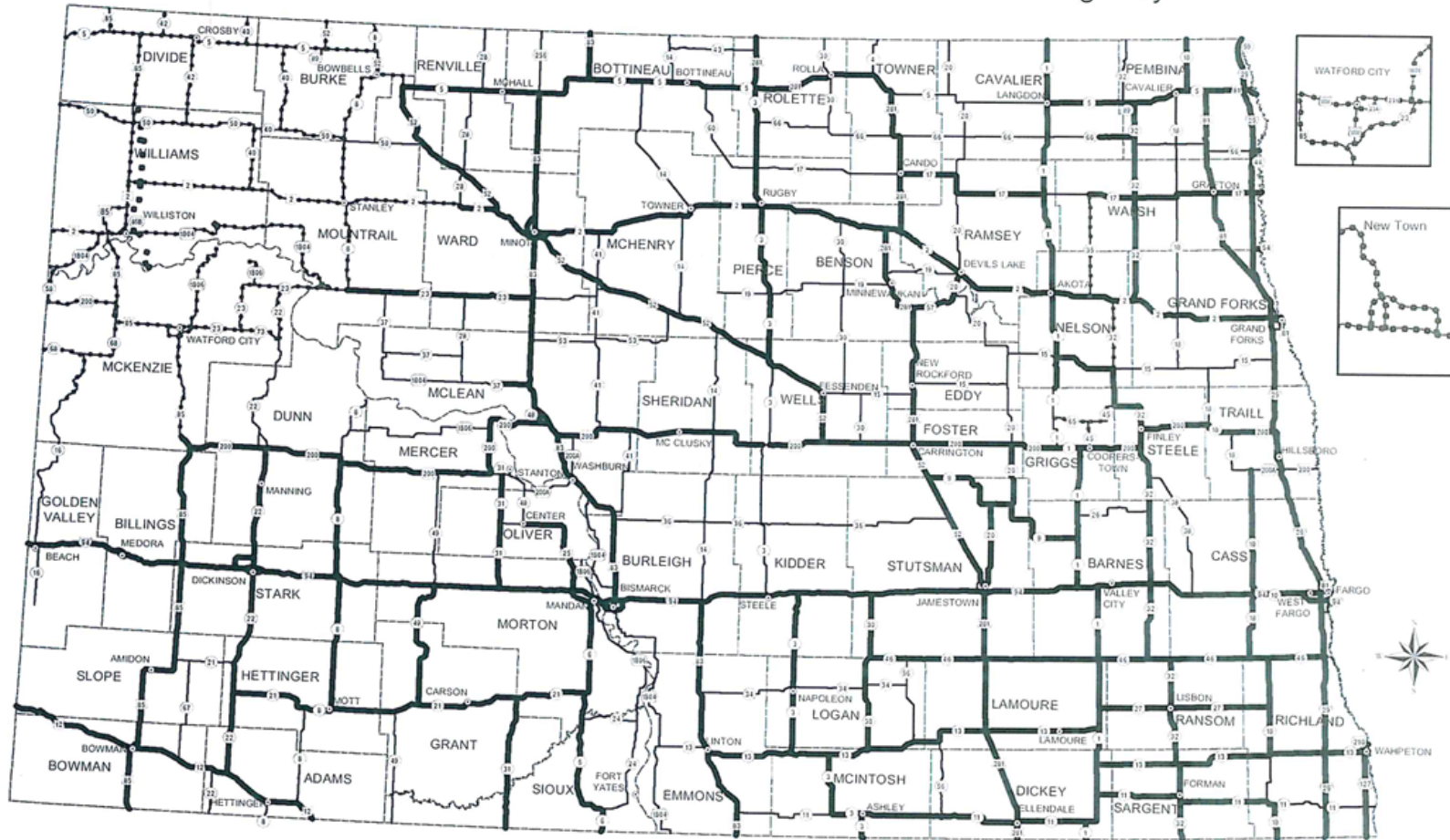
Dimensions	24hr Travel	*Daylight Travel	Weekend Travel	**Holiday Travel
Over 16' wide	NO GO	Yes GO	Yes GO	NO GO
12' - 16' wide	NO GO	Yes GO	Yes GO	Yes GO
12' wide/less, 120' long/less, OR overweight only	Yes GO	Yes GO	Yes GO	Yes GO
Overheight and/or overlength only	NO GO	Yes GO	Yes GO	Yes GO

*Daylight travel is ½ hour before sunrise to ½ hour after sunset.

** Holidays are New Year's Day, Memorial Day, Independence Day, Labor Day, Thanksgiving Day, Christmas Eve/Christmas Day, and New Year's Day.

Holidays	Loads Exceeding 16' in Width
New Year's Day	May not travel from noon on Dec. 31 until sunrise on Jan. 2
Memorial Day	May not travel from noon on May 24 until sunrise on May 27
Independence Day	May not travel from noon on July 3 until sunrise on July 5
Labor Day	May not travel from noon on Aug. 30 until sunrise on Sept. 2
Thanksgiving Day	May not travel from noon on Nov. 26 until sunrise on Nov. 28
Christmas Eve/Christmas Day	May not travel from noon on Dec. 24 until sunrise on Dec. 26
New Year's Day	May not travel from noon on Dec. 31 sunrise on Jan. 2

HIGHWAY LOAD LIMITATIONS for Self-Propelled Earthmoving Equipment on North Dakota State Highways




NOTE: THE HIGHWAY LOAD LIMITATIONS MAP MUST BE USED IN CONJUNCTION WITH THE PERMIT BRIDGE LOAD LIMITATIONS MAP WHEN ROUTING ALL SELF-PROPELLED EARTHMOVING EQUIPMENT.

THE LOAD RESTRICTIONS MAP AND ROAD RESTRICTION PERMIT POLICY WILL SUPERSEDE THE HIGHWAY LOAD LIMITATIONS MAP. SCRAPER MOVEMENTS ARE NOT ALLOWED DURING SPRING THAW.

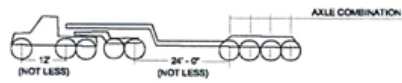
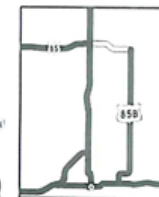
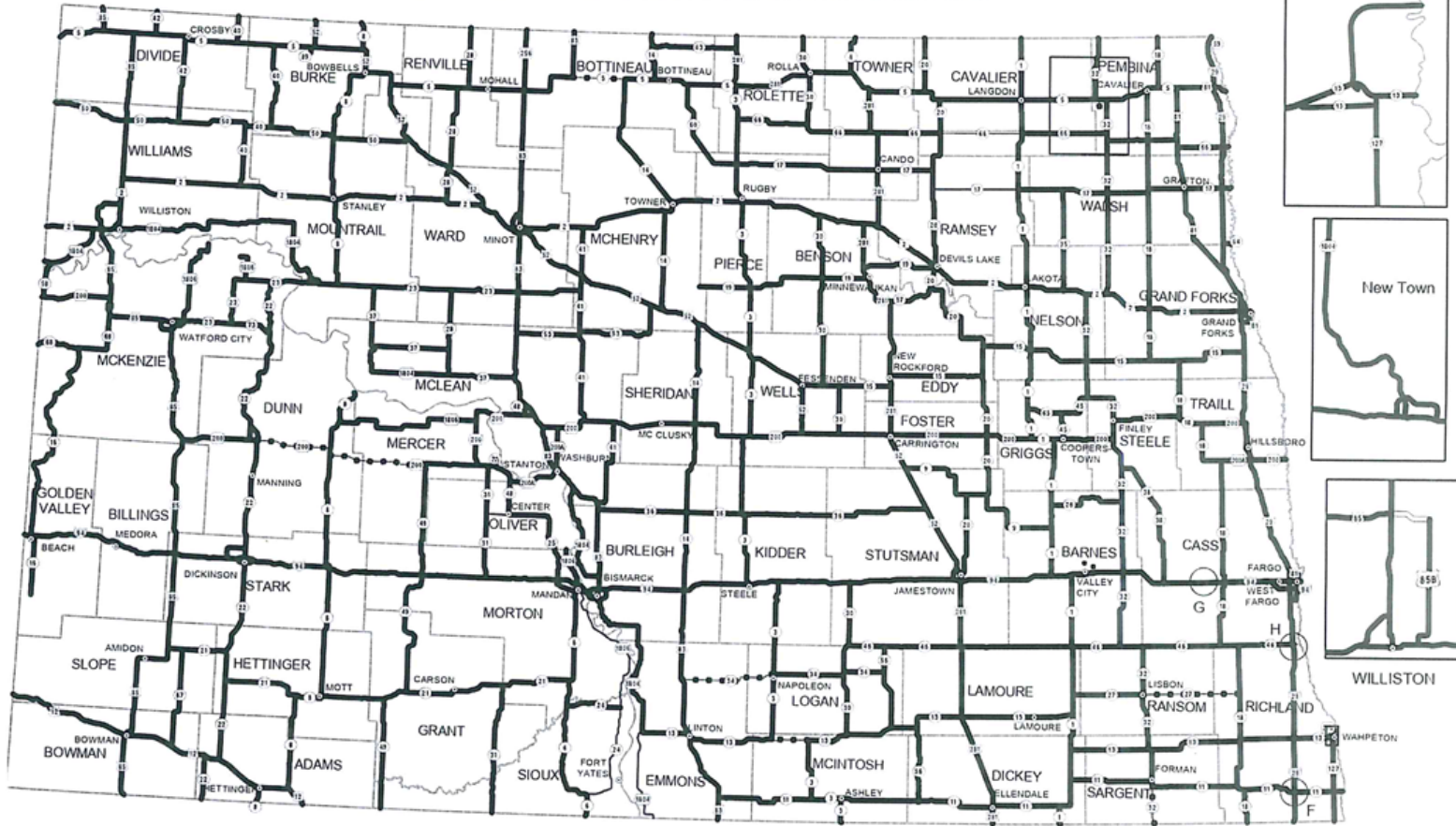
- UP TO 52,000 LBS. PER AXLE
- UP TO 38,500 LBS. PER AXLE
- NO MOVEMENT PERMITTED

APPROVED:


 G, the NDDOT DIRECTOR

03/25/24
 DATE
 9-6 ANNEX B

PERMIT BRIDGE LOAD LIMITATIONS ON NORTH DAKOTA STATE HIGHWAYS



- CLASS 1 - Up to 68,000 lbs. per Axle Combination
- CLASS 2 - Up to 64,000 lbs. per Axle Combination
- CLASS 3 - Up to 48,000 lbs. per Axle Combination
- CLASS 4 - Up to 34,000 lbs. per Axle Combination

LIMITATIONS ON STRUCTURES
 F = ND 11 OVER I-29 - CLASS 3
 G = ND 10 OVER I-94 - CLASS 2
 H = ND 46 OVER I-29 - CLASS 2



APPROVED:

M. Scott Johnson
 For the NDDOT DIRECTOR



5/10/24
 DATE
 9-6 ANNEX A

ND Chapter 39-12, SIZE, WIDTH, AND HEIGHT RESTRICTIONS:

<https://ndlegis.gov/cencode/t39c12.pdf>

ND Chapter 38-06-02 ADOPTION OF REGULATIONS :

<https://ndlegis.gov/prod/acdata/pdf/38-06-02.pdf>

ND PERMIT POLICY FOR MOVEMENT OF VEHICLES AND LOADS THAT ARE OVERWIDTH ONLY:

<https://www.nd.gov/ndhp/sites/www/files/documents/Permits/Aug2023Updates/9-6-f%20handout.overwidth.pdf>

North Dakota Roads Conditions:

<https://travel.dot.nd.gov/>

North Dakota Holiday Listings 2025:

<https://www.nd.gov/ndhp/sites/www/files/documents/Permits/2025%20Holiday%20Listing.pdf>